

# The Victorian Energy Efficiency Target Scheme

Past, present and future

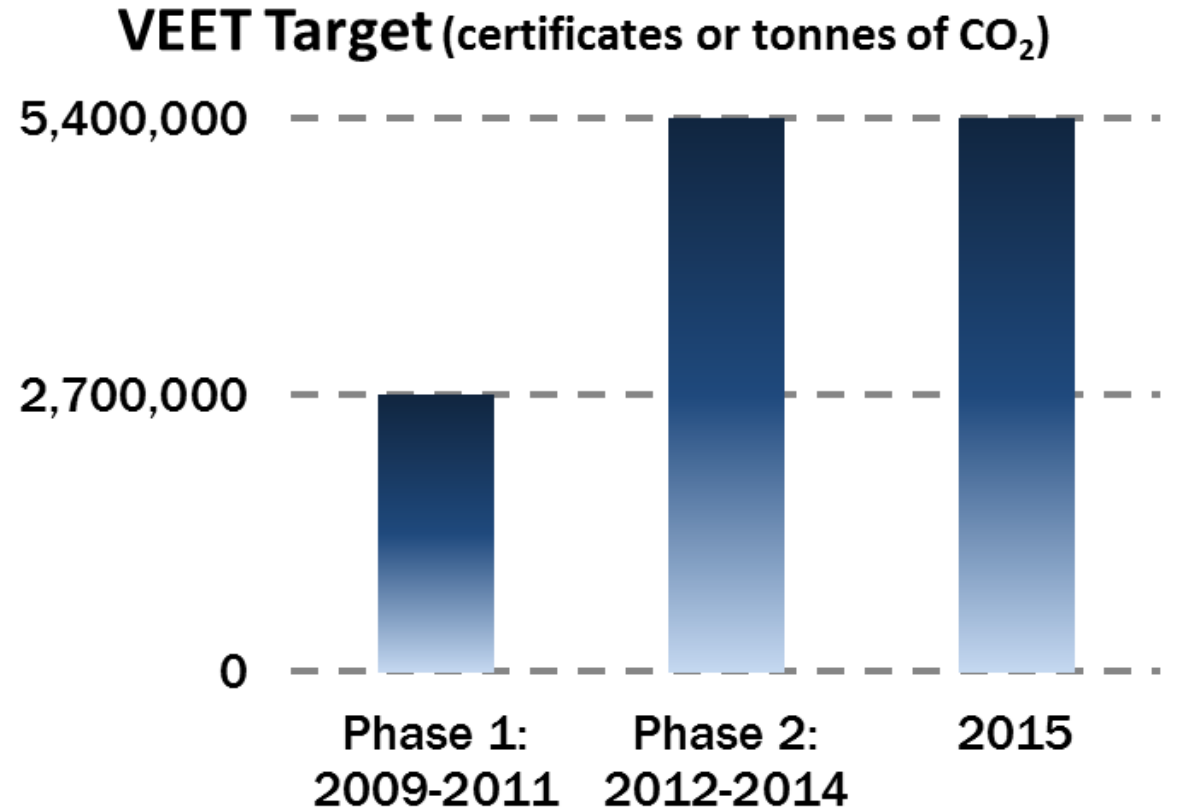
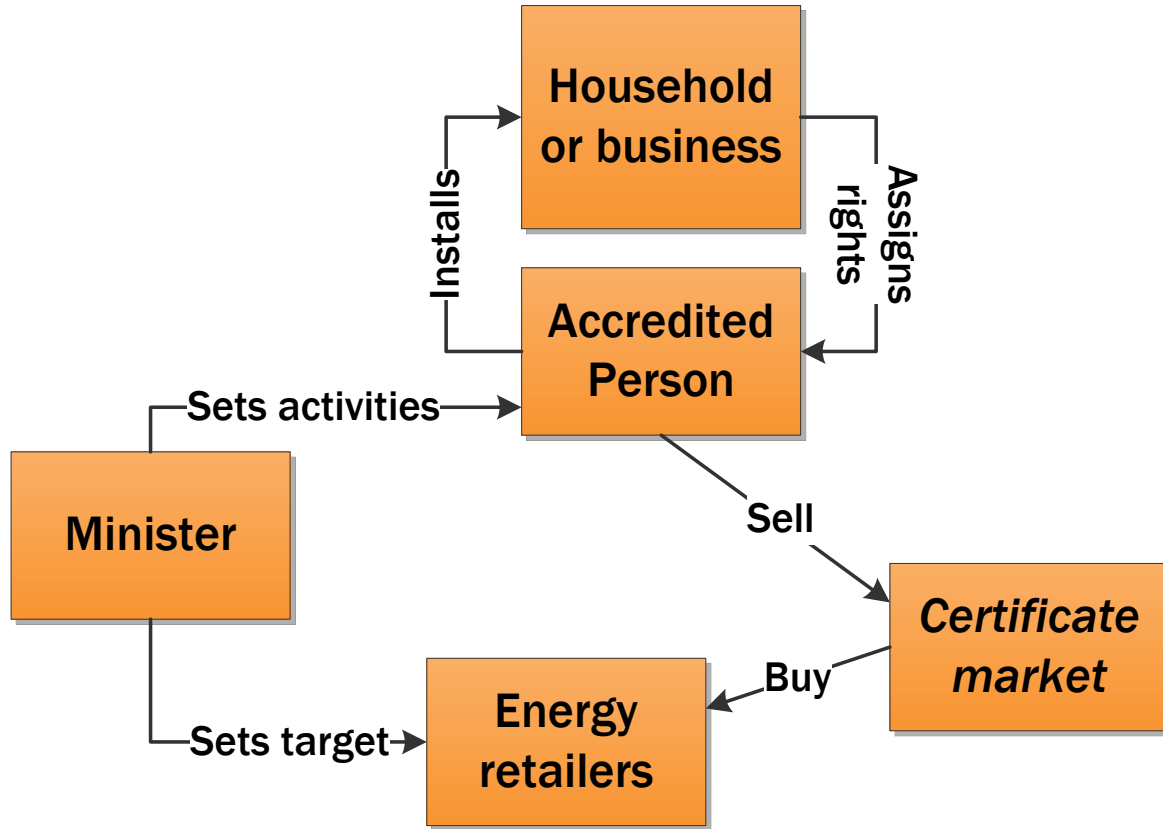
Kathryn Lucas-Healey, Senior Policy Officer  
Department of Economic Development, Jobs, Transport and Resources

UNCLASSIFIED



Economic Development,  
Jobs, Transport  
and Resources

# Overview



# Snapshots

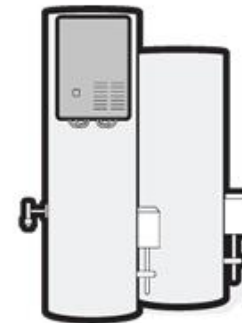


**1,000,000**  
home lighting  
upgrades

**2,000**  
business lighting  
upgrades



**58,000**  
water heaters



**75,000**  
old fridges  
destroyed



**14,000**  
high efficiency  
appliances

...**1** window  
upgrade

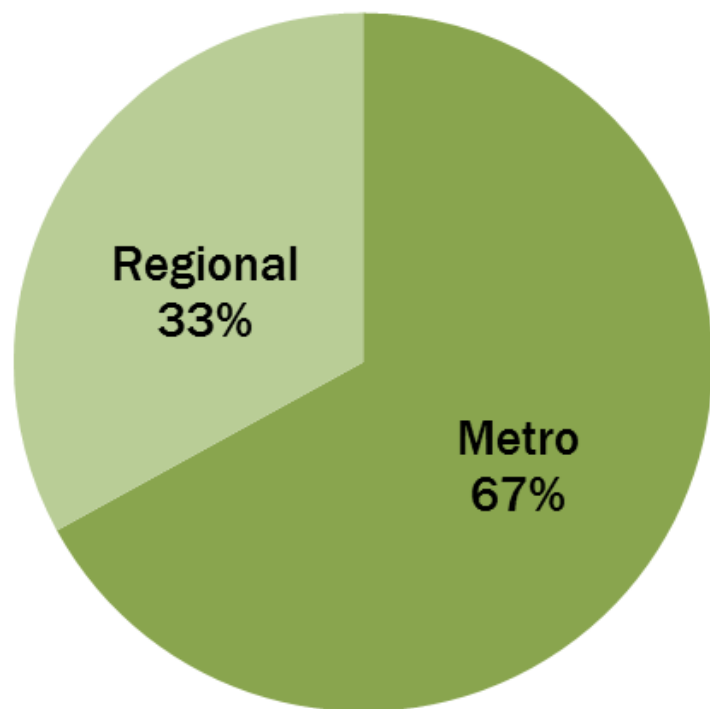


UNCLASSIF



Economic Development,  
Jobs, Transport  
and Resources

# Snapshots



**33%** of activities regional (since commencement)

**40** active businesses week-to-week

**2,000** jobs

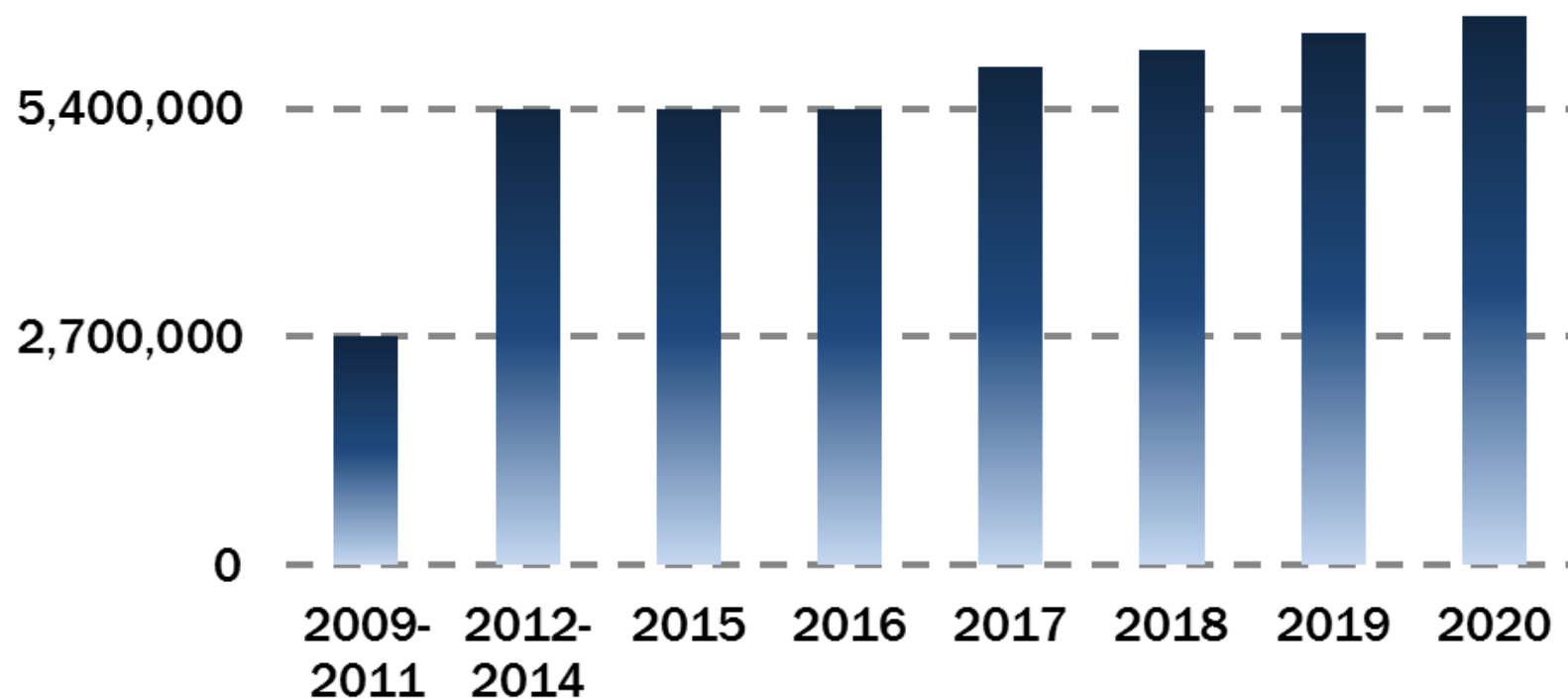
**10-15%** of certificates generated in the business sector (current trend)

# Current work

**August 2015:**  
New five-year targets

**Now to 2016:**  
Revised Regulations  
New deemed activities  
Project-based assessments  
Ongoing alignment

**VEET Target (certificates or tonnes of CO<sub>2</sub>)**



# Project-based assessments

## Potential Project-based methods for the VEET scheme:

### Measurement and Verification (M&V) Method

- Forward-deeming option
- Large projects, large businesses
  - *(NSW PIAM&V method)*

### NABERS Method

- Uses NABERS Energy ratings to measure savings
  - *(NSW & ERF methods)*

### Control and Treatment Method

- Many small interventions
- Compare control and treatment groups
- *(NSW Aggregated Metered Baseline; ERF Aggregated Small Energy Users)*

### Smaller-Scale M&V Methods

- For smaller scale projects, e.g. HVAC boilers and fans

# Project-based assessments

## How might these changes alter the VEET scheme?



Businesses with more in-house energy efficiency expertise



Greater engagement between energy retailers and customers



Diverse services and skill sets

- Energy auditing
- Measurement and verification
- NABERS assessments
- Statistical analysis



New value propositions with greater client co-contributions



Certificate creation shifting to the business sector



Larger projects generating more certificates



Step change in industry capacity to deliver methods

# Tell us what you think

**Consultation is still open – new/amended activities and project-based assessments**

**Details [www.energyandresources.vic.gov.au/esi](http://www.energyandresources.vic.gov.au/esi)**

- **Project-based assessments feedback closes Sunday 29 November 2015**
- **Call for new/amended activities closes Friday 11 December 2015**